



General Engineering & Environmental Companies, Inc.

12241 Industriplex Boulevard, Suite C
Baton Rouge, LA 70809
Phone: (225) 753-6545
Fax: (225) 753-6597



Since its inception in 1988, General Engineering & Environmental Companies, Inc. has completed projects in the engineering, environmental and surveying fields. We have experience in structural, mechanical, industrial, and plant engineering. Some of GEEEC's relevant engineering experience includes river and reservoir outfall/intake projects, water/waste water treatment projects, pumping facility projects, heavy structural projects, marine structural and dock projects, and mechanical piping. Our surveying experience includes hydrographic surveying, pipeline surveying, GPS surveying, aerial and video surveying, and Geographic Information Science (GIS) services.



General Engineering & Environmental Companies, Inc.

Presents:  **TOPCON GLS-2000**
Compact High Speed 3-D Laser Scanner



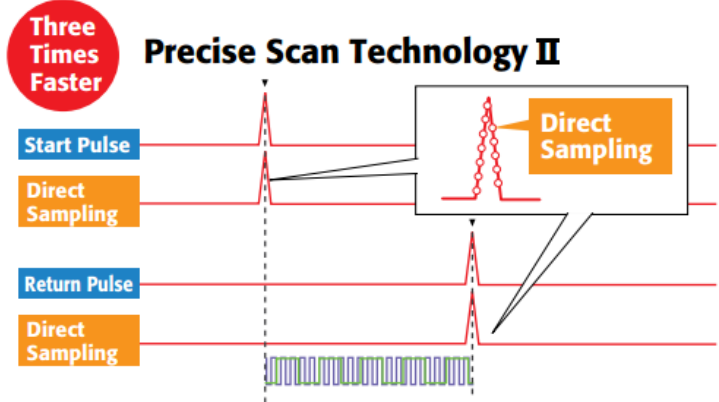
GLS-2000

Compact, versatile and user-friendly
Laser Scanner

GEEC's staff of fully trained surveyors are extremely qualified with the latest technology in the surveying industry.

Using the GLS-2000, GEEC is able to scan a range of over 350m to capture 3D point cloud data at a high speed without having to sacrifice the standard of accuracy we uphold in our surveys.

3-D scanners, such as the GLS-2000, can be useful in multiple industries, such as construction and civil engineering projects, design processes, reverse engineering, and quality insurance and industrial metrology.

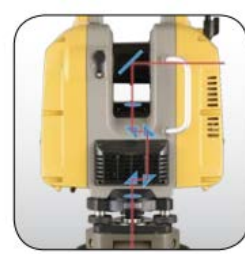


Point Scan Technology II allows the GLS-2000 to emit pulses three times faster than previous models. This faster pulse enables it produce a clear signal wavelength, thus allowing more precise timing.

Coupled with an ultra high-speed analog converter, this reduces noise and results in high-accuracy data.

GLS-2000 features include:

- High Accuracy with Precise Scan Technology
- High Speed 360° Dome Scanning
- Long Range
- Dual Camera
- Eye Safe, Selectable Laser Technology
- Compact, Lightweight, Rugged Design



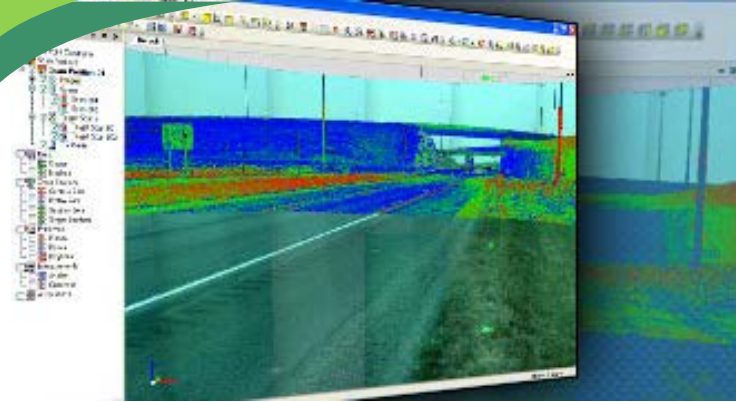
Direct HI Measurement



Full Dome Field-of-View



Dual Cameras



ScanMaster

Office Software 3D point cloud acquisition/manipulation

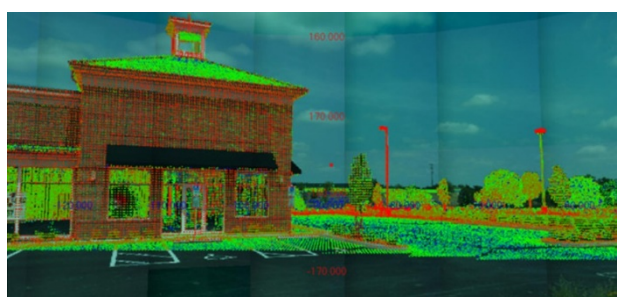
Along with the GLS-2000 hardware, GEEC utilizes the Topcon ScanMaster 3D software. ScanMaster is a full featured 3D point cloud software package that includes tools for processing, editing, and delivering point cloud data from the GLS-2000.



Feature Details:

- Mass 3D Point Cloud Acquisition and Manipulation
- Traverse and Back Sight Capabilities
- Image Capture and Live Video Feed
- Target Scans and Tie-point Registration
- Create mesh Objects and Annotations

360 degree images are recorded and overlapped to and accurate grid of horizontal and vertical angles. Scanned points and polylines can be overlaid on these images.



Overlay point clouds by intensity color to determine where additional scan locations will be needed.

Buildings, utility lines, vegetation and street signs can all be located through laser scanning.

